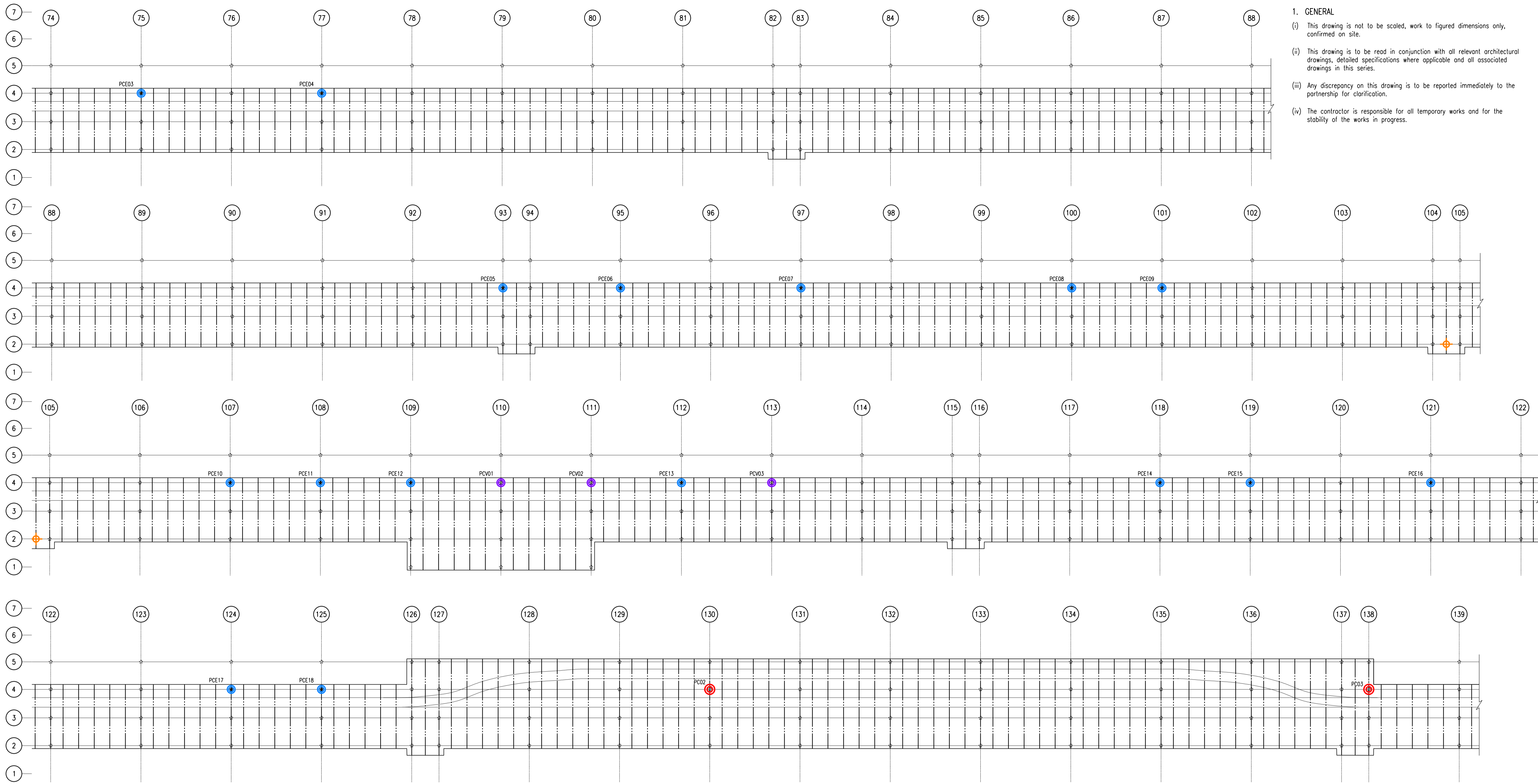


NOTES.

- 1. GENERAL
- (i) This drawing is not to be scaled, work to figured dimensions only, confirmed on site.
- (ii) This drawing is to be read in conjunction with all relevant architectural drawings, detailed specifications where applicable and all associated drawings in this series.
- (iii) Any discrepancy on this drawing is to be reported immediately to the partnership for clarification.
- (iv) The contractor is responsible for all temporary works and for the stability of the works in progress.



KEY:-

- PCO1 INDICATES FAILED PILE CAP (ORIGINAL WORKS 2015/16)
- PCE01 EMERGENCY PILE CAP REPAIRS (2016)
- PCE02 EMERGENCY PILE CAP REPAIRS (NON STANDARD REPAIR)
- PCV01 EMERGENCY PILE CAP REPAIR VO 1 (2016)
- M01 INDICATIVE MAINS WATER FED PUMP
- M02 INDICATIVE SALT WATER FED OUTLET
- PCO01 INDICATIVE 2 WAY TUG INLET

FOR FURTHER DETAILS REFER TO 'ESSEX COUNTY FIRE AND RESCUE SERVICE DRAWING WS/14152

HOP
HEMSLEY ORRELL PARTNERSHIP
CONSULTING CIVIL & STRUCTURAL ENGINEERS

ISSUED FOR INFORMATION

ISSUED FOR INFORMATION		28.07.2016		L.R.S		-	
Revision		Date	By	Rev. No.			
Client SOUTHEND-ON-SEA BOROUGH COUNCIL							
Project SOUTHEND PIER EMERGENCY REPAIRS							
Title LOCATION PLAN OF EMERGENCY WORKS SHEET 2of4							
<p>HEMSLEY ORRELL PARTNERSHIP CONSULTING CIVIL & STRUCTURAL ENGINEERS HOP House, 41 Church Road, Hove BN3 2BE Tel : +44 (0)1273 223900 E-Mail : engineers@hop.uk.com www.hop.uk.com</p>							
Scales	Date	Drawn	Engineer	Checked	Approved	HOP Contact	
1:200 U.N.D	07/16	J.K.M	N.P.C	N.P.C	-	N.CHASTON	
Project No.	Task No.	Dwg. No.	Rev. No.				
12211	23	LBC02	-				